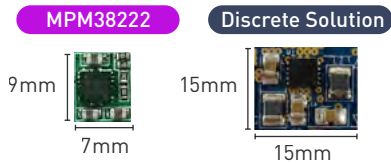


Power Module Family

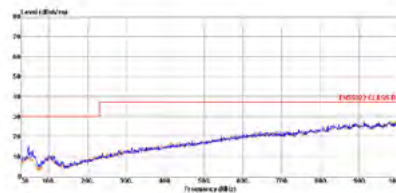
MPS's power modules have a wide V_{IN} and I_{OUT} range with a variety of packages. Our extensive portfolio of DC/DC modules integrate inductors, FETs, compensation, and other passive components into a single package to simplify the design process. Choose what module works best for your design based on our beneficial features. Visit MonolithicPower.com for more information.

Small Size & Ease-of-Use



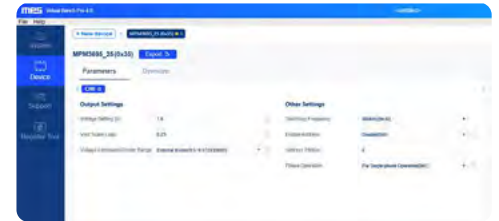
Minimal External Components
Easy Layout
Fast Design Cycle

Low EMI



Meets EN55022
Class B EMI Standards

Scalability & Programmability



Graphic User Interface (GUI)
Available

MPM3515



QFN-17
(3mmx5mmx1.6mm)

- 4V to 36V Input Voltage Range
- 1.5A Load Current
- FCCM & PG
- Output Adjustable from 0.8V

MPM3833C



QFN-18
(2.5mmx3.5mmx1.6mm)

- 2.75 to 6V Input Voltage Range
- Adjustable Output from 0.6V
- 3A Load Current
- FCCM & EN & PG

MPM3860



QFN-24
(4mmx6mmx1.6mm)

- 2.75V to 7V Input Voltage Range
- 6A Output Current
- FCCM for Low V_{OUT} Ripple
- EN & PG

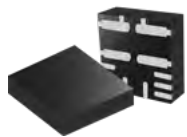
MPM3683-20



LGA-29
(7mmx7mmx4.4mm)

- 4 to 16V Input Voltage Range
- 0.6V to 5.5V Output Voltage Range
- 15A Load Current, Peak 20A
- FCCM or Pulse-Skip Mode

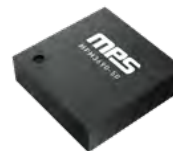
MPM38222



QFN
(4mmx4mmx1.6mm)

- 2.7V to 6V Input Voltage Range
- Dual Output, Max 2A
- Enhanced Light-Load Efficiency
- Individual EN Pins
- Pin-to-Pin with Dual 1A MPM38111

MPM3690-50(A/B)



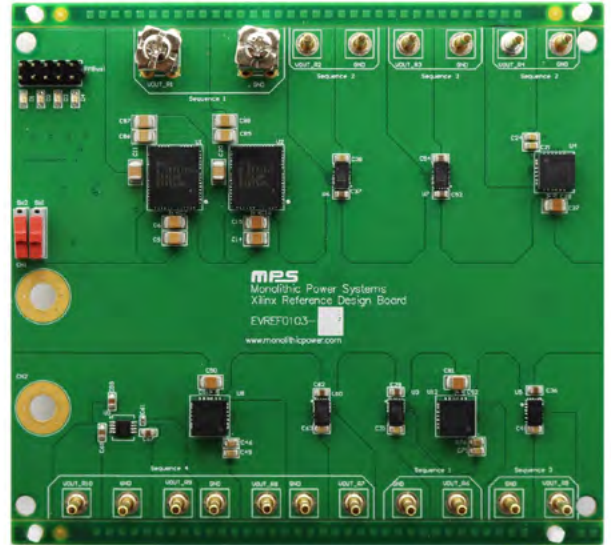
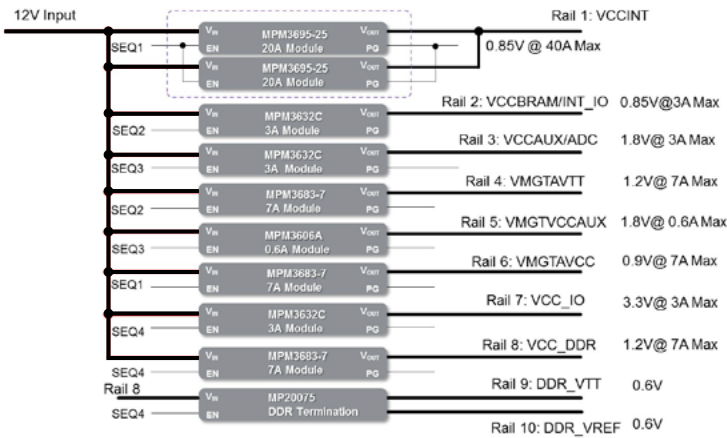
BGA
(16mmx16mmx5.18mm)

- 4V to 16V Input Voltage Range
- Dual 25A or Single 50A
- 0.6V to 1.8V Output Voltage Range



Power Module Solutions for FPGA

EVREF0103A for Kintex/Zynq UltraScale+



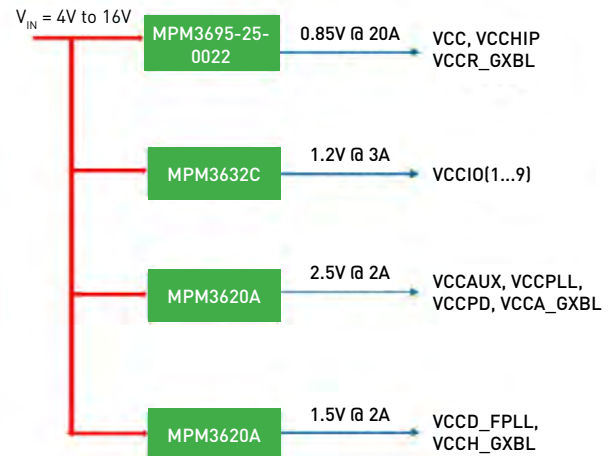
FPGA Series	FPGA Part Numbers	EVB Part Number
Virtex UltraScale/+	VU11P, VU13P	EVREF0104-A
	VU5P, VU7P, VU9P, VU35P, VU37P	EVREF0104-B
	VU3P, VU31P, VU33P	EVREF0104-C
Kintex UltraScale/+	KU13P, KU15P	EVREF0103-A
	KU3P, KU5P, KU9P, VU11P	EVREF0103-B
Zynq UltraScale+ MPSoc	ZU9CG, ZU9EG, ZU11EG-ZU19EG	EVREF0101-A
	ZU3cG to ZU7EV	EVREF0101-B
Virtex UltraScale/+	XC7Z007S to XC7Z020, XC7Z030	EVREF0100-A
Zynq UltraScale+ RFSoc	ZU21DR to ZU29DR	EVREF0102-A

Stratix-V Reference Design

Rail	Voltage (V)	Load (A)
VCC, VCCHIP, VCCR_GXDL	0.85V	6A to 20A
VCCIO[1...7]	1.0V	1A to 3A
VCCAUX, VCCPLL, VCCPD, VCCA_GXBL	2.5V	1A to 2A
VCCD_FPLL, VCCH_GXBL	1.5V	0.5A to 2A



High-Power Solution



Complete FPGA reference designs available at MonolithicPower.com

