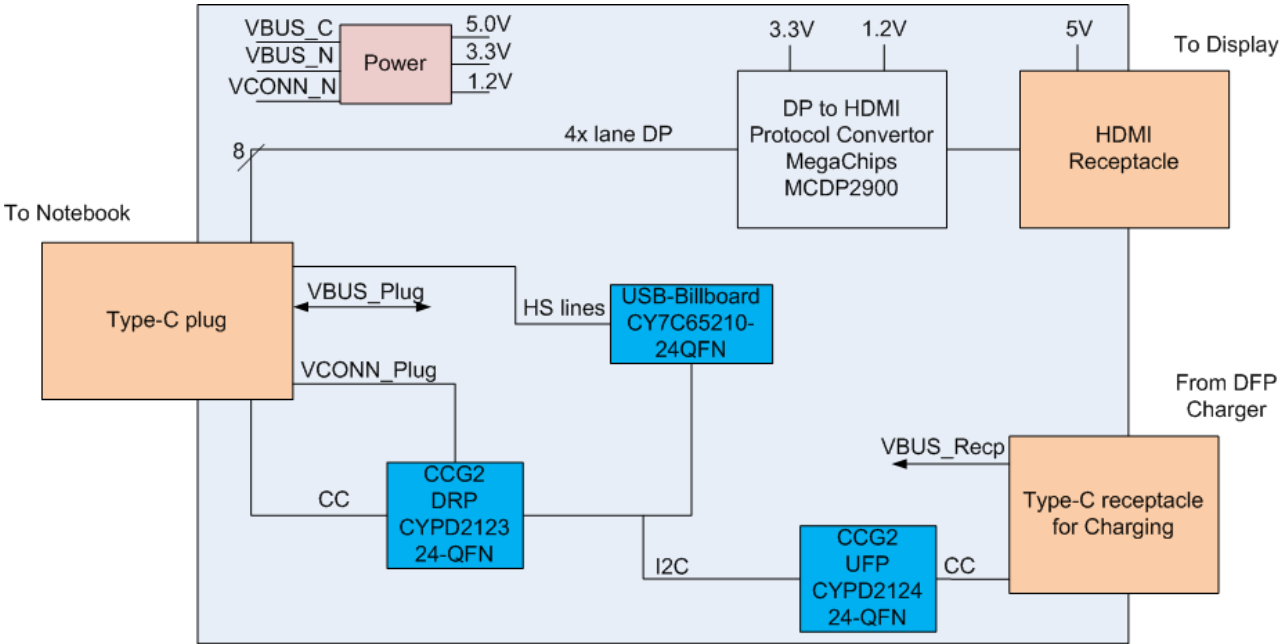


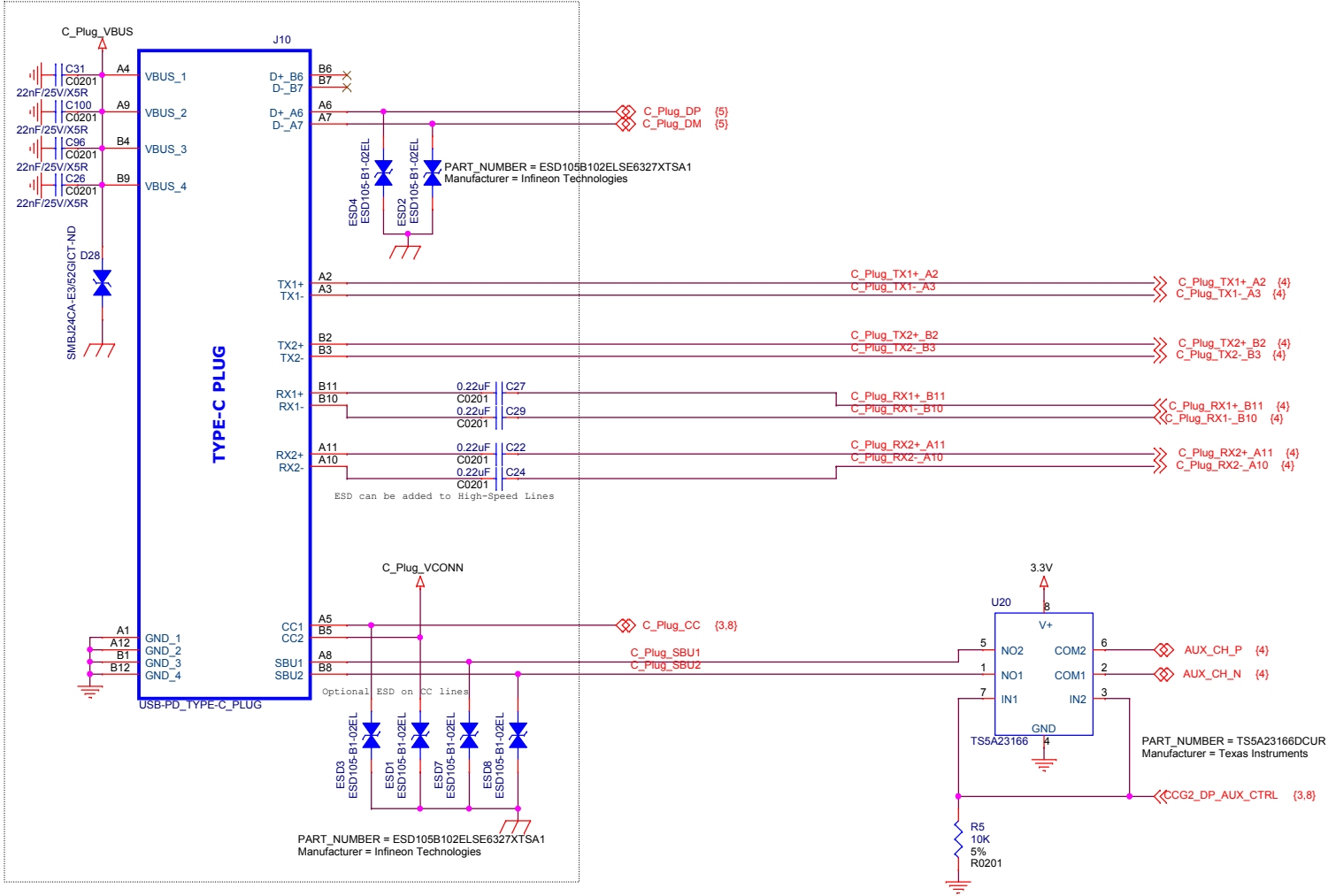
CCG2 USB Type-C Charge-Through Dongle with HDMI Reference Schematic

Table Of Contents	
Sheet	Description
1	Table of Contents
2	Type-C Plug/HS Switch
3	CCG2 connected to NB
4	DP to HDMI
5	USB Billboard
6	CCG2/Type-C Charger
7	Power - MPS
8	Power Block Diagram

Revision History		
Revision	Date	Revision Summary
*	05-12-2016	Initial Release

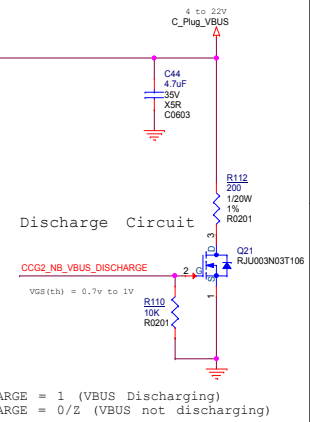
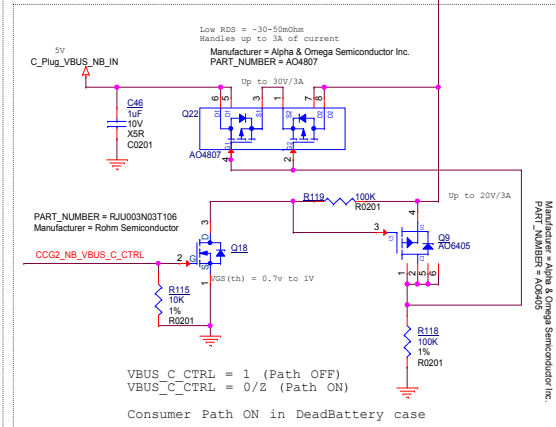
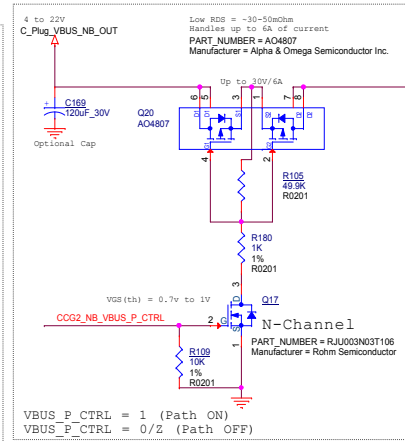
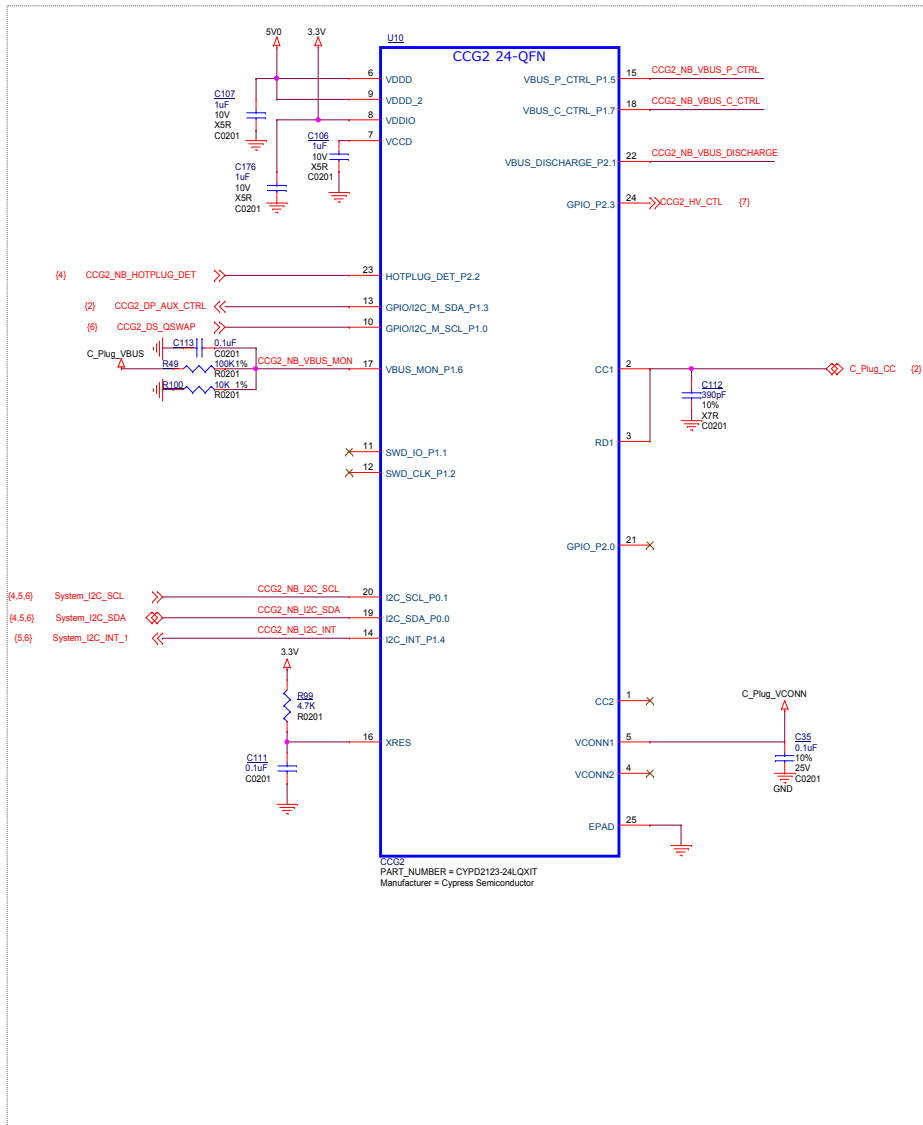


Type-C Plug



Title			
CCG2 USB Type-C Charge-Through Dongle with HDMI Reference Schematic			
Size	Document	Number	Rev
B	305-PD-15-0788		*
Date:	Thursday, May 12, 2016	Sheet	2 of 8

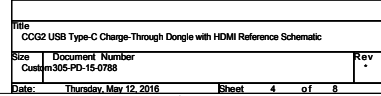
CCG2 connected to NB



Title			
CCG2 USB Type-C Charge-Through Dongle with HDMI Reference Schematic			
Size	Document Number		Rev
Custom	305-PD-15-0788		A
Date:	Thursday, May 12, 2016	Sheet	3 of 8

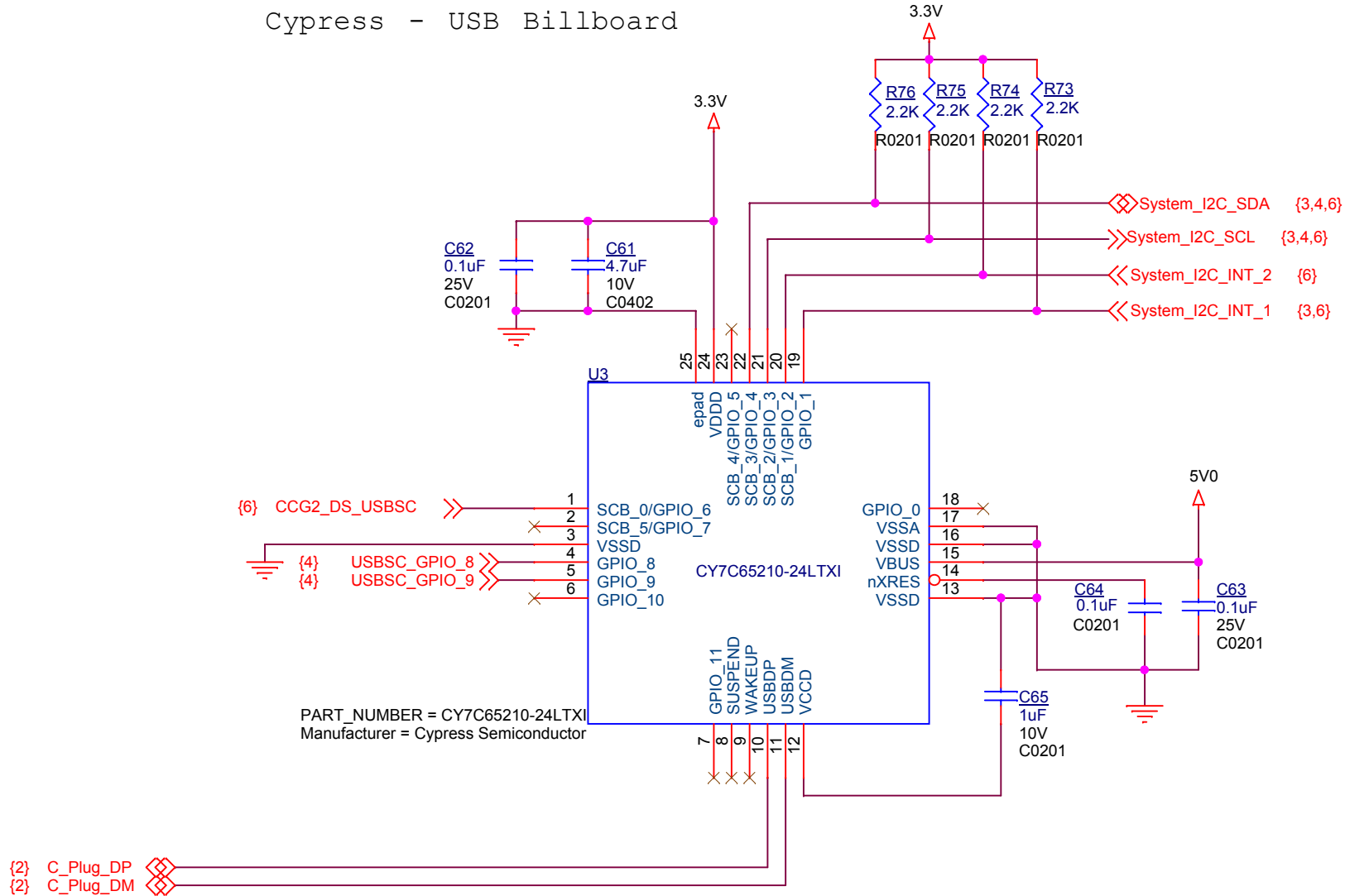
TPS2553 limits the current to 100mA to ensure there is enough power in the system when the solution is powered via VCCORN only

The diagram shows the TPS2553 current limiter circuit. The device is a square package with pins 1 through 6. Pin 1 (IN) is connected to a 100K resistor (R239) and a 0.1uF capacitor (C186), both leading to GND. Pin 2 is connected to GND. Pin 3 (EN) is connected to GND. Pin 4 is connected to GND. Pin 5 (ILIM) is connected to a 226K 1% resistor (R240) leading to GND. Pin 6 (OUT) is the output terminal.



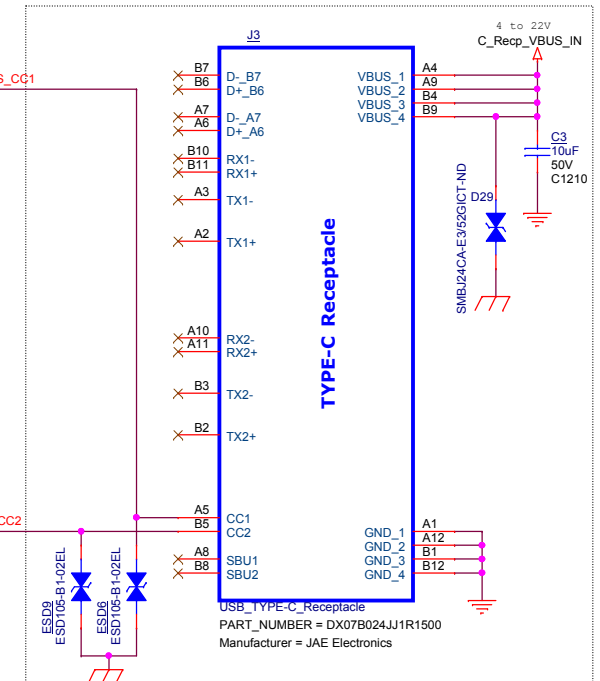
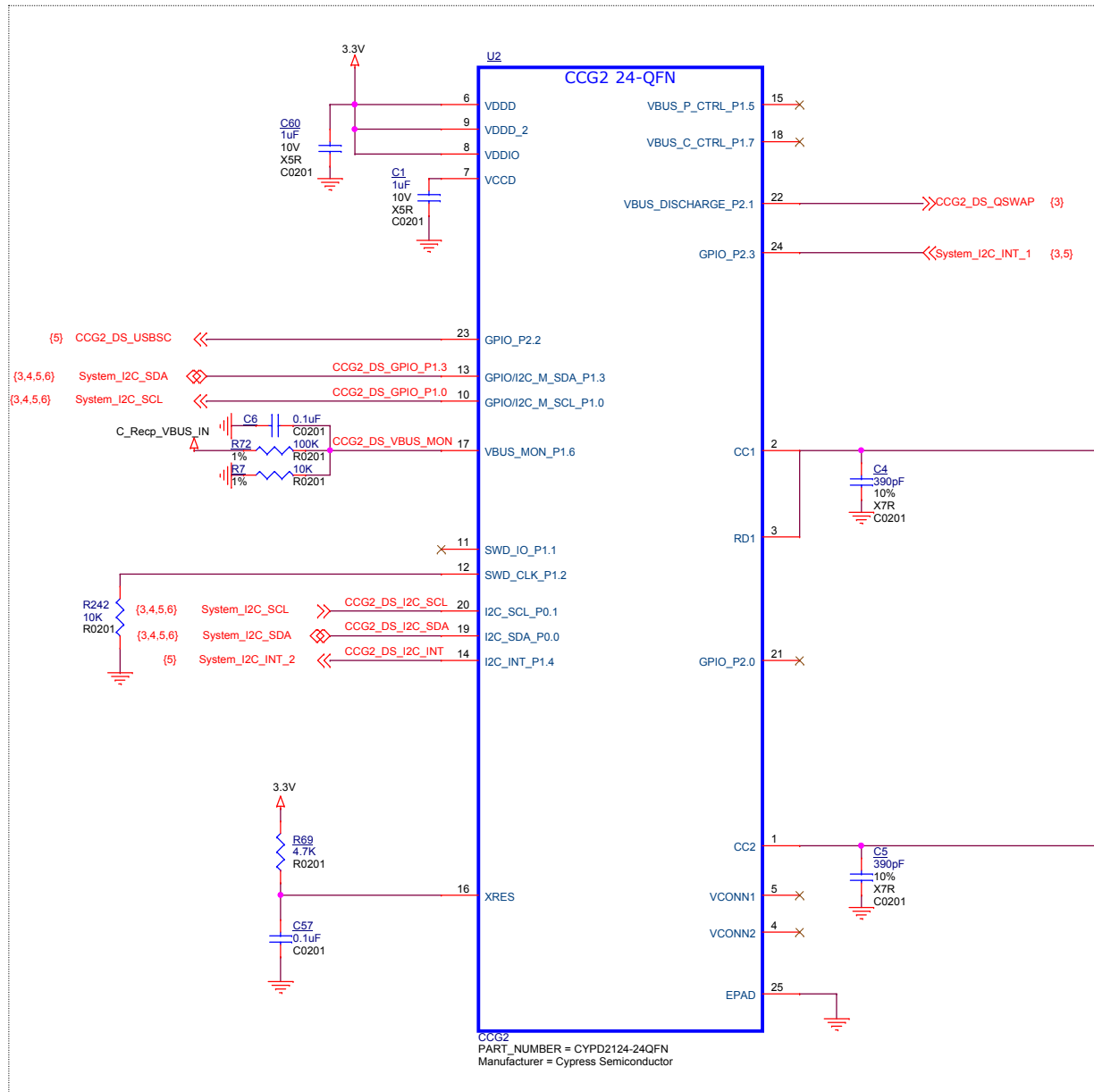
USB Billboard

Cypress - USB Billboard

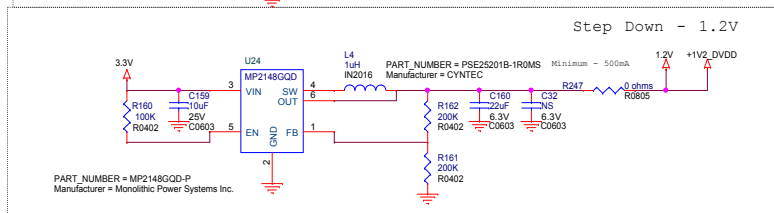
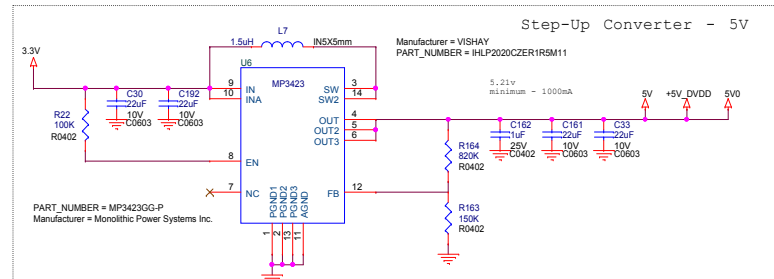
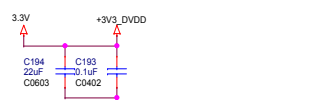
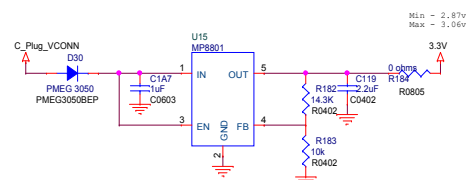
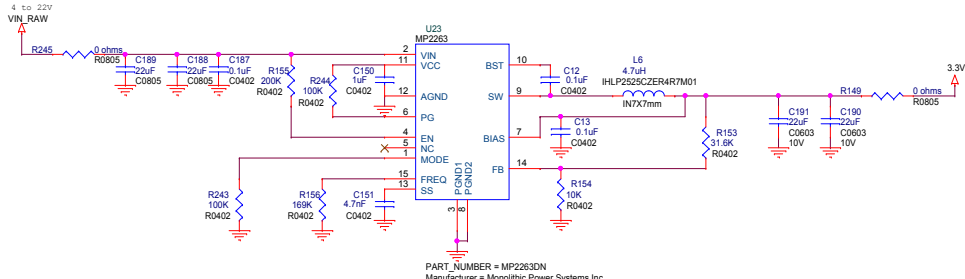
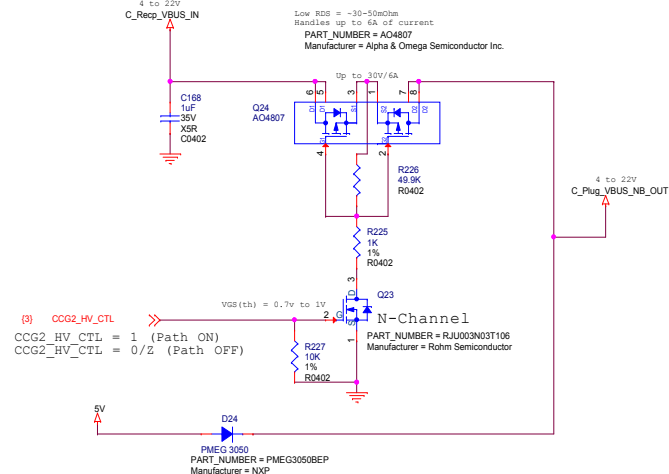
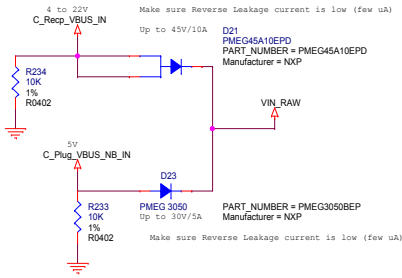


Title		
CCG2 USB Type-C Charge-Through Dongle with HDMI Reference Schematic		
Size	Document Number	Rev
A	305-PD-15-0788	*
Date:	Thursday, May 12, 2016	Sheet 5 of 8

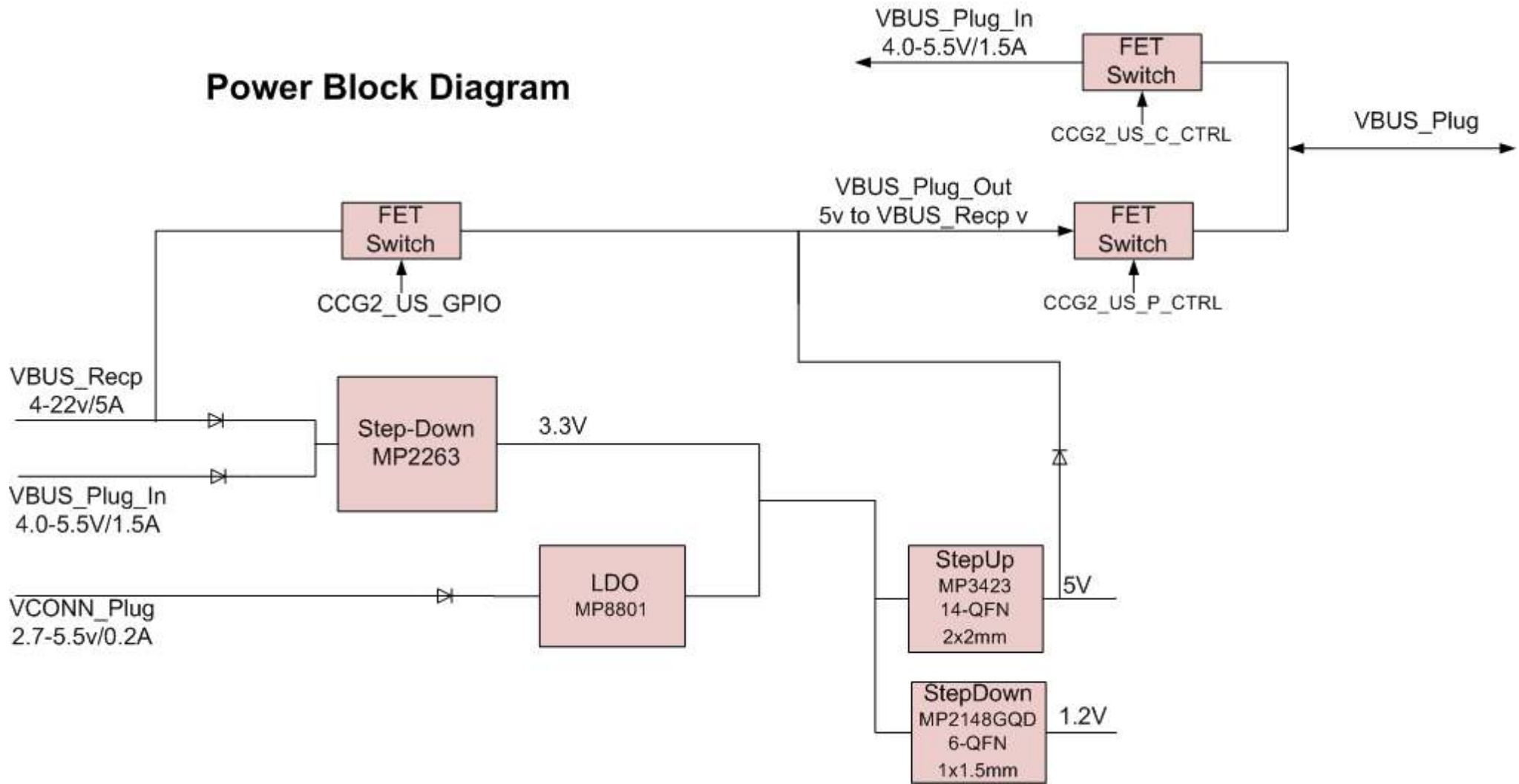
CCG2/Type-C Charger



Title			
CCG2 USB Type-C Charge-Through Dongle with HDMI Reference Schematic			
Size	Document	Number	Rev
B		305-PD-15-0788	*
Date:	Thursday, May 12, 2016	Sheet	6 of 8



Power Block Diagram



Title
CCG2 USB Type-C Charge-Through Dongle with HDMI Reference Schematic

Size	Document Number	Rev
A	305-PD-15-0788	*

Date: Thursday, May 12, 2016 Sheet 8 of 8